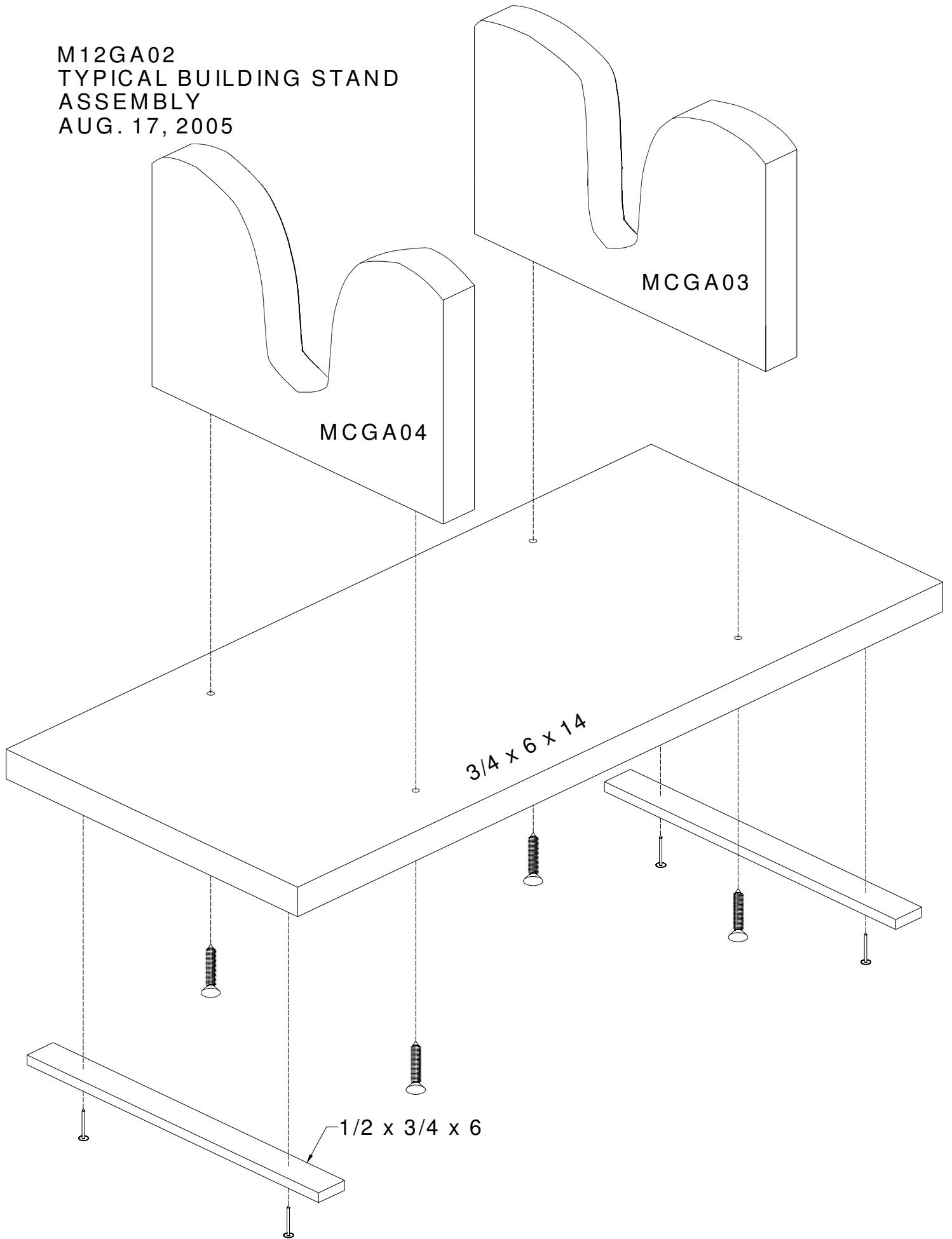
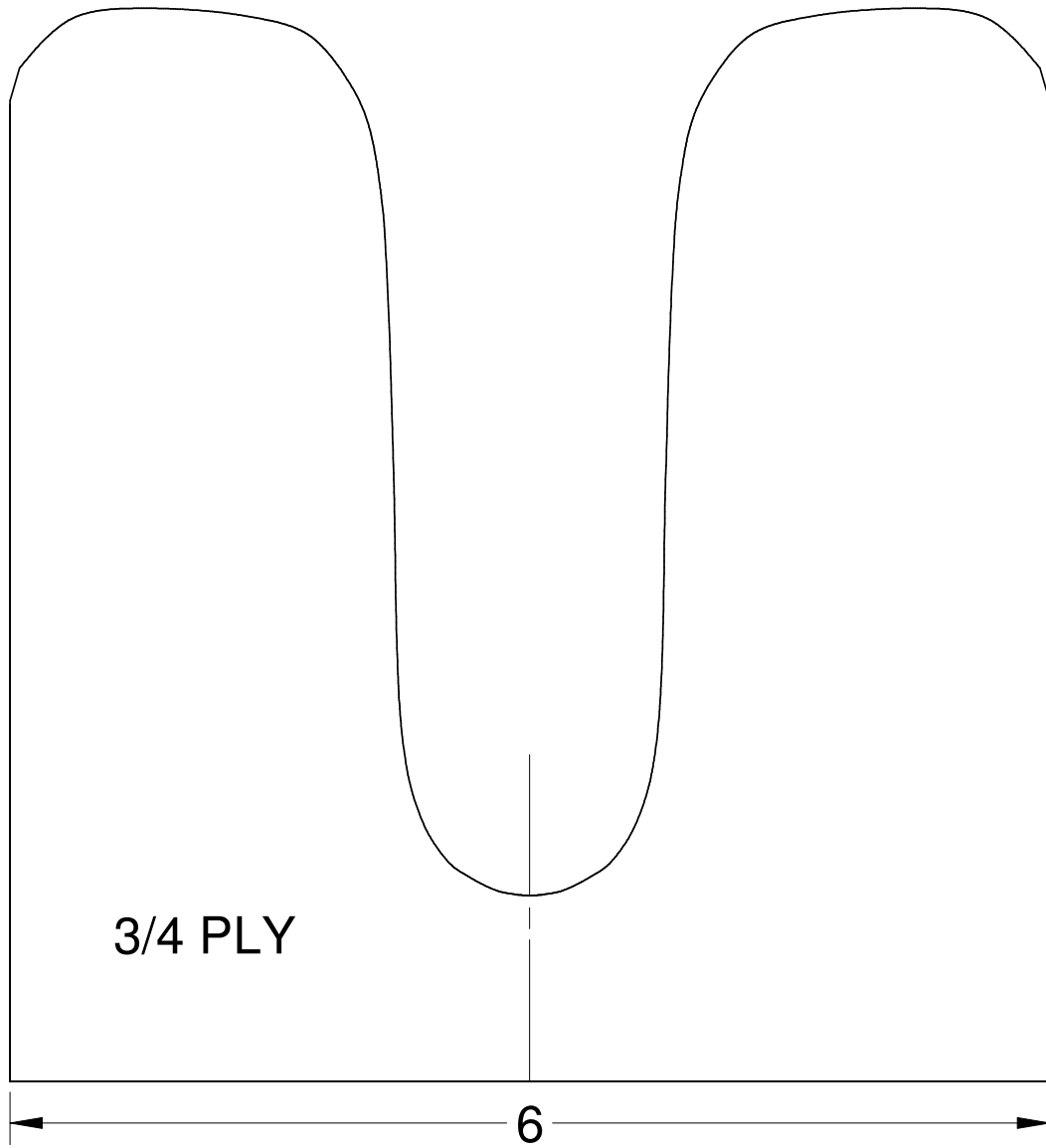


**M12GA01
TYPICAL RIGGING
AUG. 17, 2005**

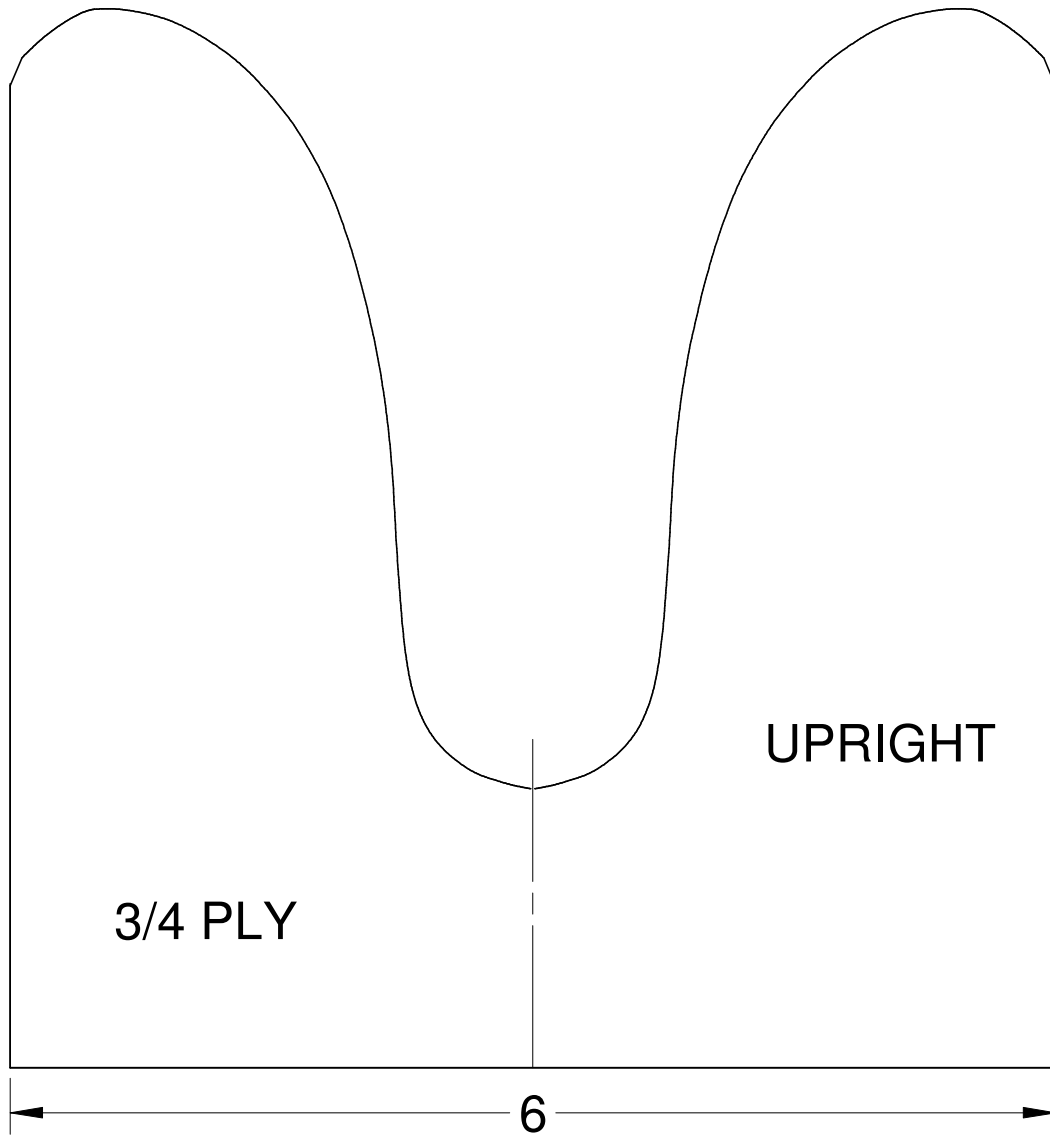
M12GA02
TYPICAL BUILDING STAND
ASSEMBLY
AUG. 17, 2005



M12GA03
TYPICAL BUILDING STAND
AFT UPRIGHT
AUG. 17, 2005

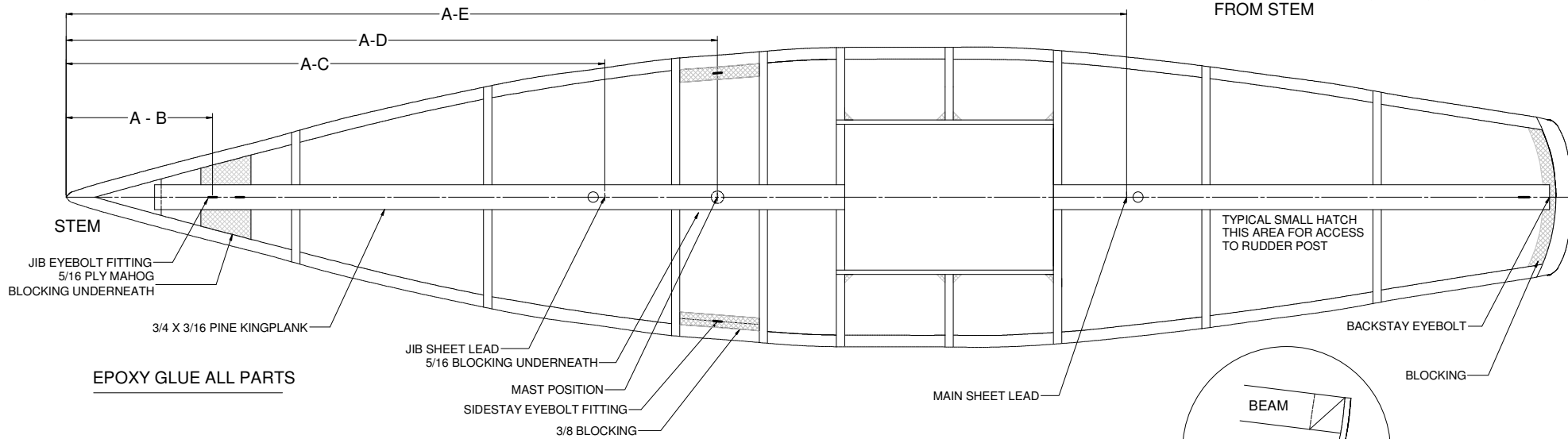


M12GA04
TYPICAL BUILDING STAND
FORE UPRIGHT
AUG. 17, 2005

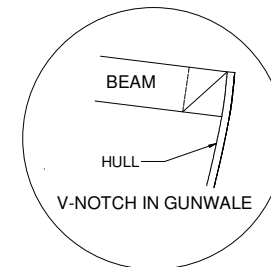
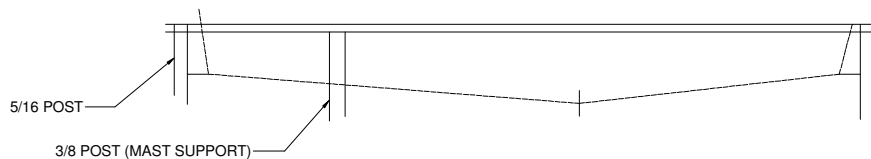


LETTER DIMENSIONS - REFER TO CLASS RULES

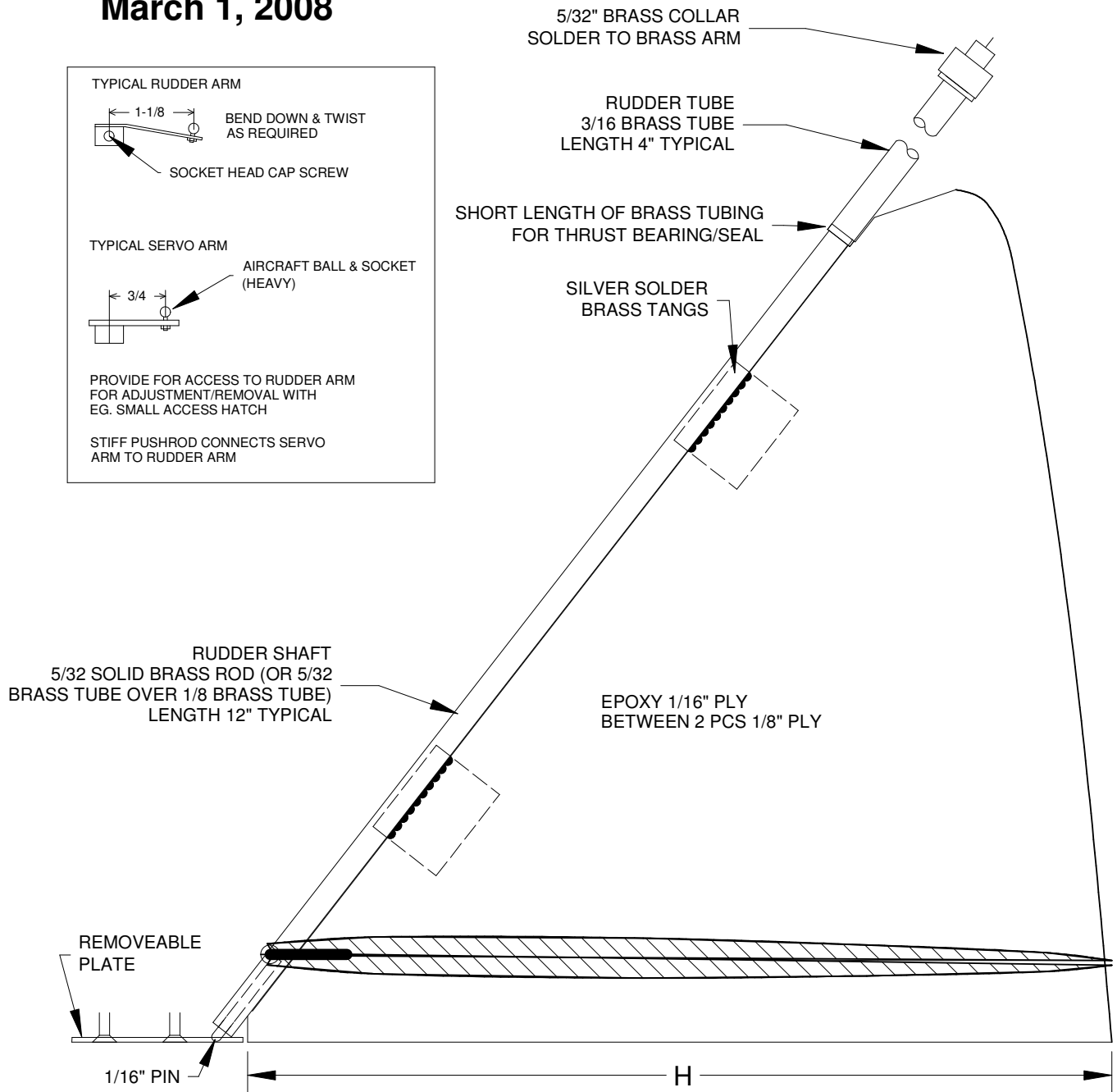
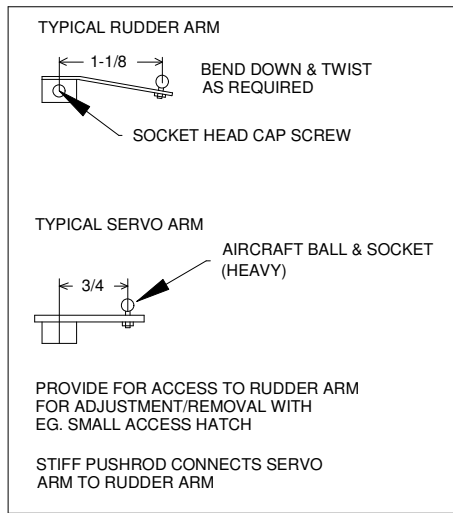
DECKBEAMS CENTERED AT 6-7/8, 12-5/8, 18-1/4, 20-7/8, 23-1/8, 30-1/4, 34-1/8, 39-1/4 FROM STEM



M12GA05
TYPICAL DECK STRUCTURE
AUG. 17, 2005

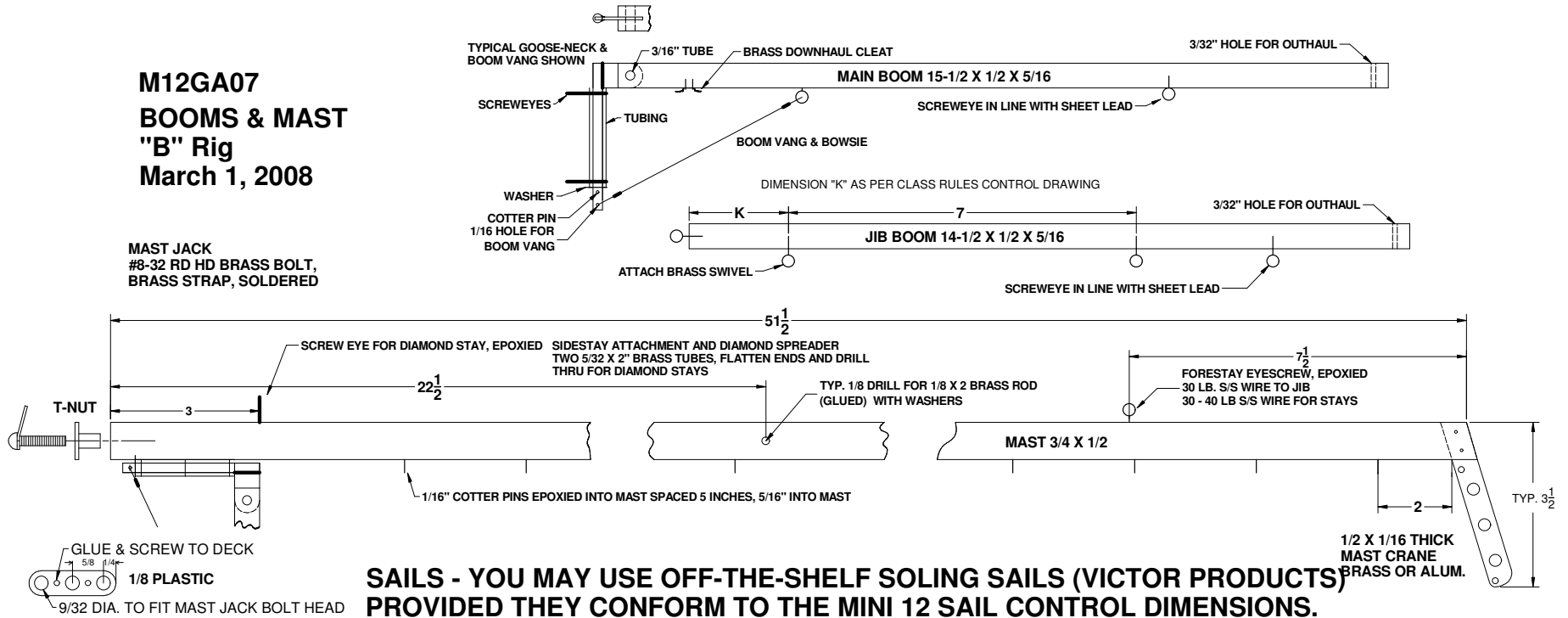


M12GA06 RUDDER ASSEMBLY March 1, 2008



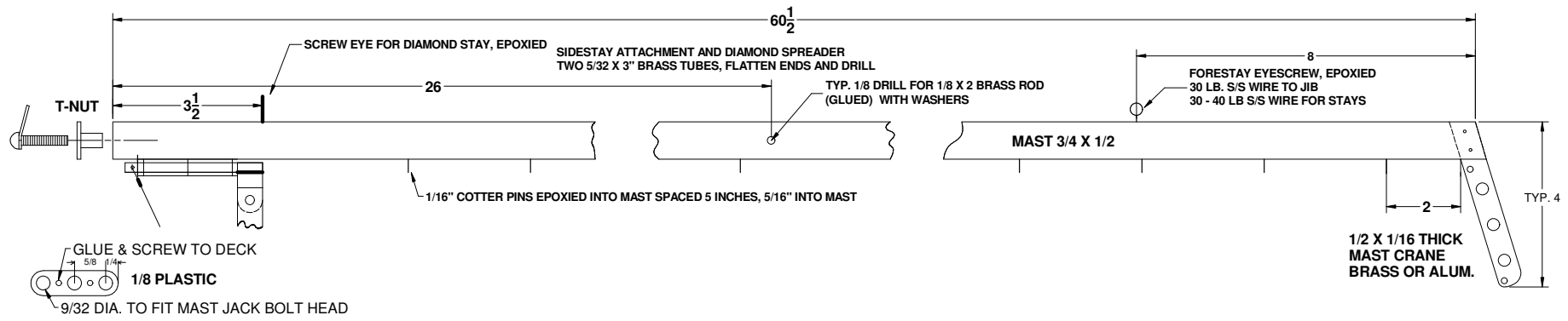
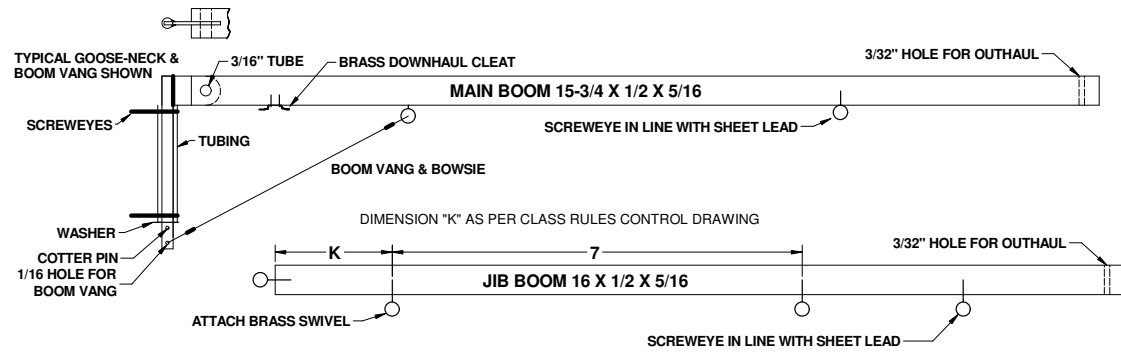
**M12GA07
BOOMS & MAST
"B" Rig
March 1, 2008**

**MAST JACK
#8-32 RD HD BRASS BOLT,
BRASS STRAP, SOLDERED**

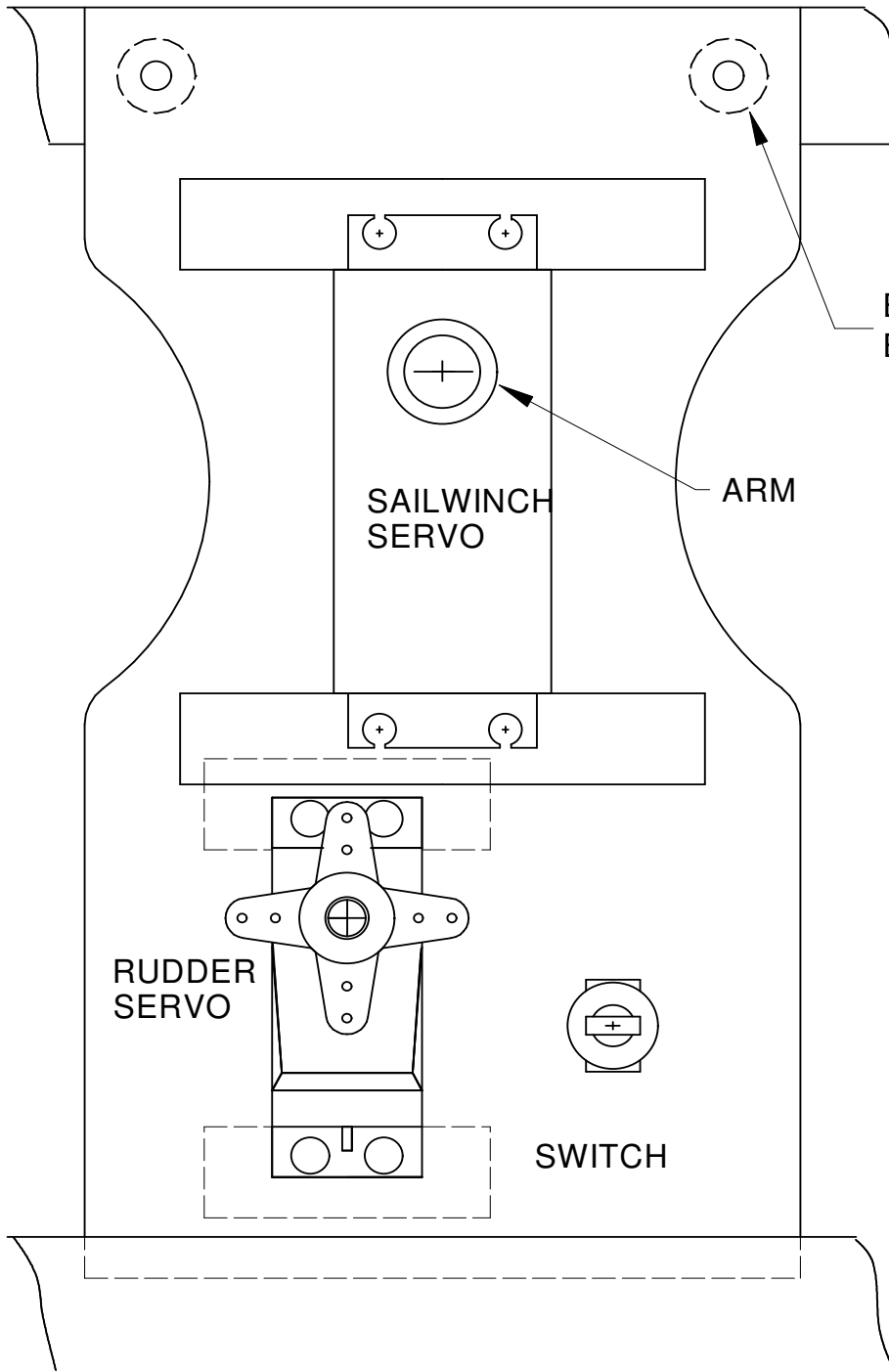


**M12GA07A
BOOMS & MAST
"A" Rig
March 1, 2008**

**MAST JACK
#8-32 RD HD BRASS BOLT,
BRASS STRAP, SOLDERED**



M12GA08
TYPICAL RADIO TRAY
AUG. 17, 2005



3/4 X 3/16 PINE

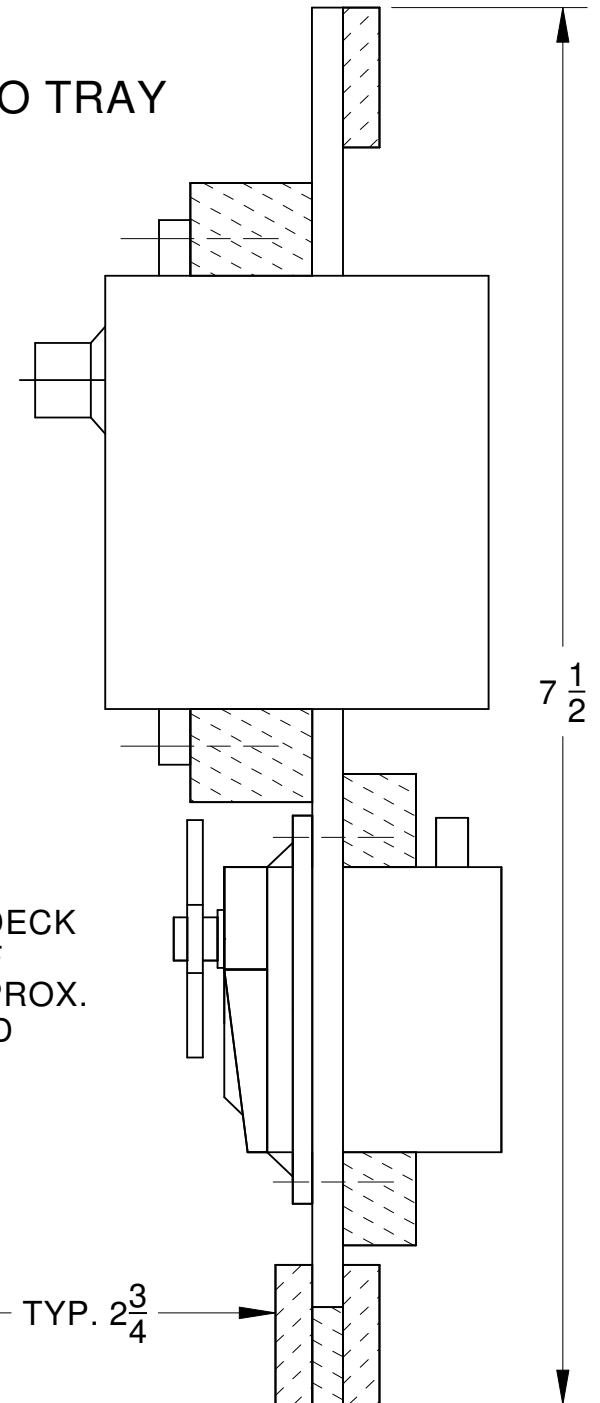
BOLTS WITH
EPOXIED T-NUTS

SAILWINCH
SERVO

ARM

RUDDER
SERVO

SWITCH

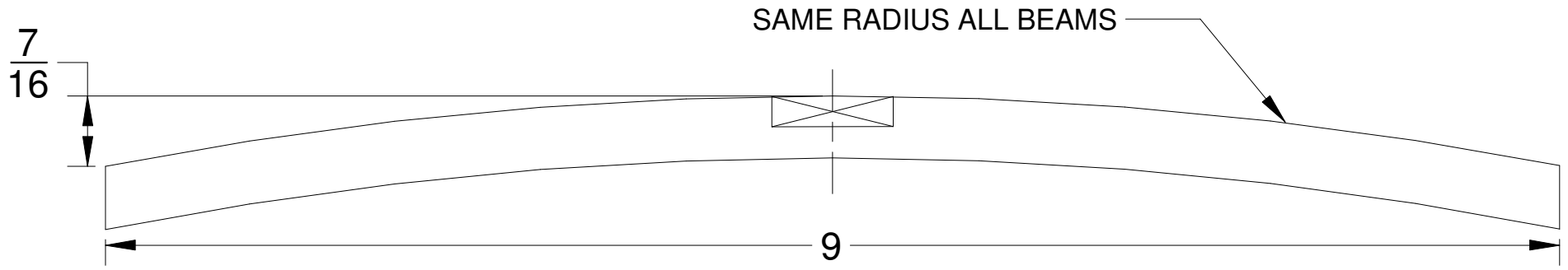


UNDERSIDE OF DECK
BEAM TO TOP OF
RADIO DECK APPROX.
2-3/4" AT AFT END

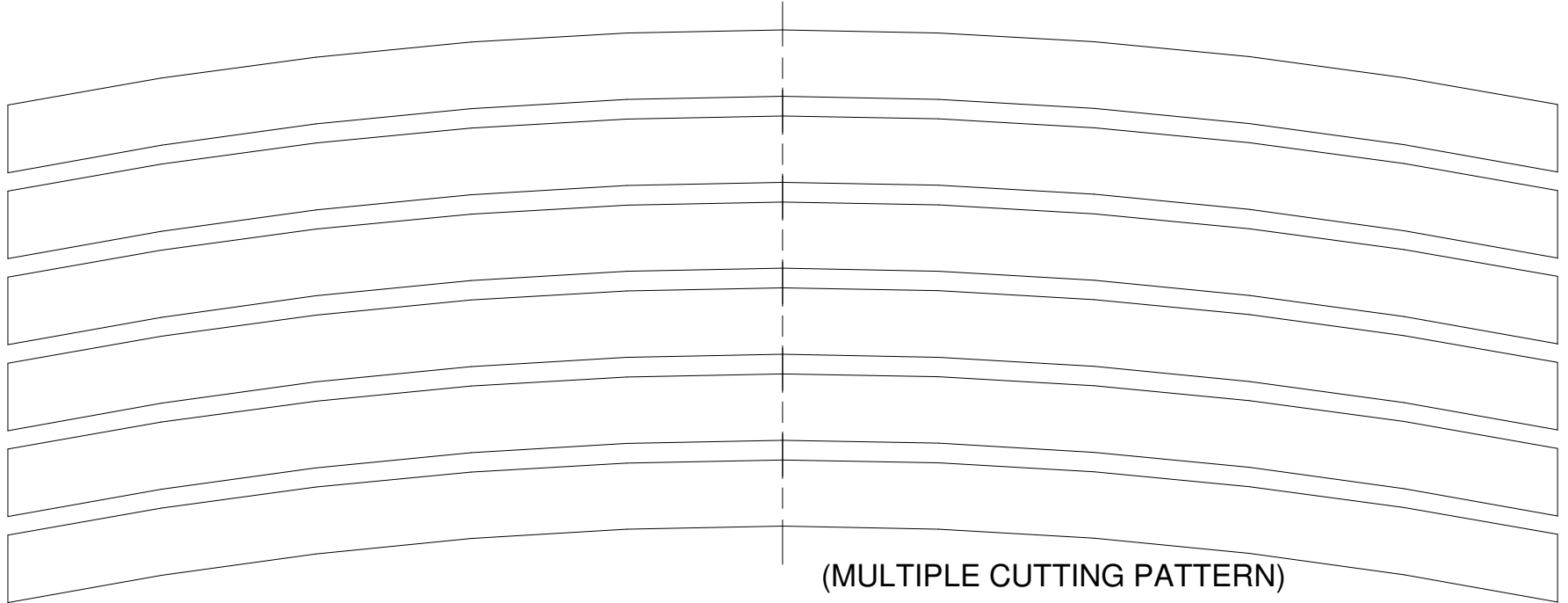
TYP. $2\frac{3}{4}$

$7\frac{1}{2}$

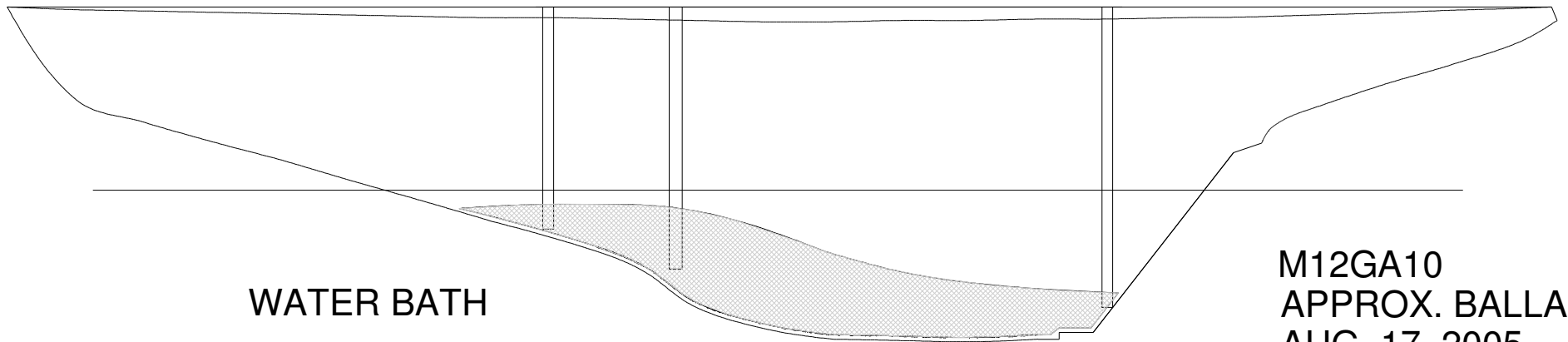
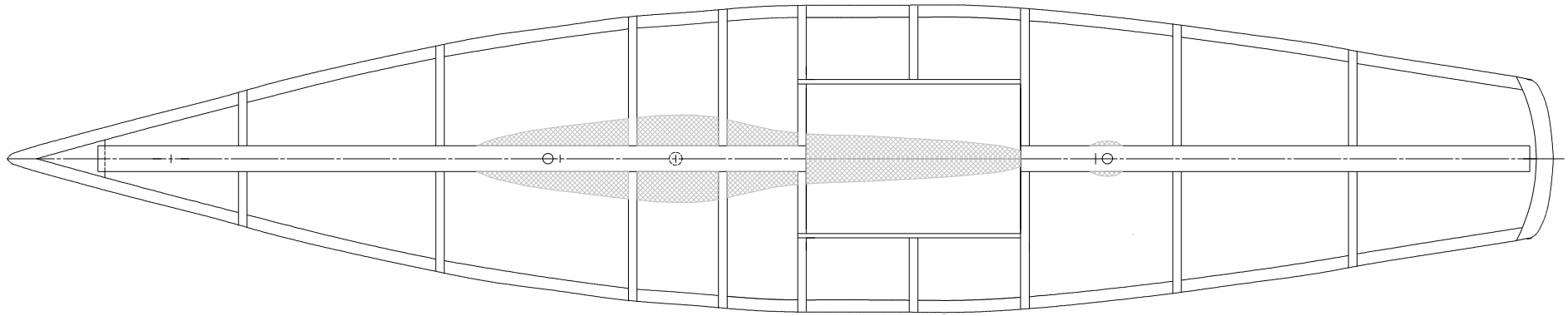
M12GA09
DECKBEAMS
AUG. 17, 2005



DECKBEAMS 3/8 X 1/8 PINE, BASSWOOD, OR PLY



(MULTIPLE CUTTING PATTERN)



WATER BATH

M12GA10
APPROX. BALLAST
AUG. 17, 2005

CASTING LEAD BALLAST IS NOT RECOMMEND FOR HEALTH AND SAFETY REASONS AND MAKES BALANCING THE BOAT DIFFICULT. AN INITIAL BATCH OF ABOUT 7 LBS. OF LEAD SHOT MIXED WITH EPOXY CAN BE Poured INTO THE HULL AND ADJUSTED FOR LEVEL OR SLIGHTLY BOW DOWN BALANCE. WHEN BOAT IS FULLY RIGGED A FINAL AMOUNT MAY BE ADDED TO BRING BOAT UP TO MINIMUM 16 LBS. WATER BATH FOR BALANCING AND FOR COOLING WHILE EPOXY CURES.

